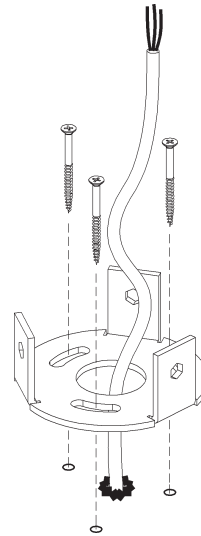
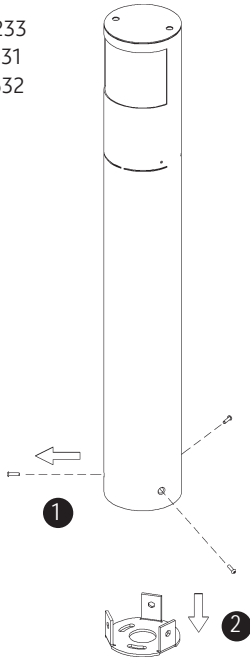


HOTEL AQUA LED BOLLARD BLENDFREI / ANTIGLARE

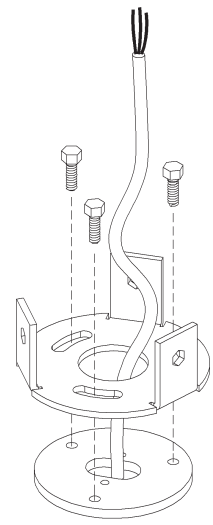
POLLERLEUCHTE / BOLLARD LUMINAIRE

009-232 . 009-233
010-629 . 010-631
010-630 . 010-632

nimbus^x



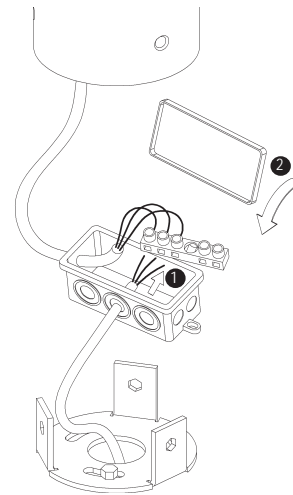
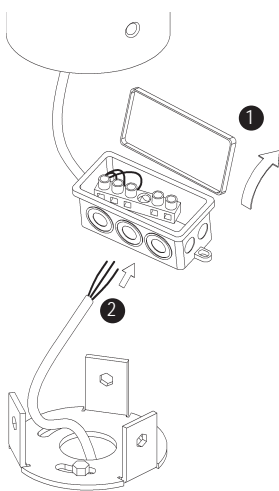
auf Beton oder Plattenboden
on concrete or flag



auf Erdspieß oder Erdanker
on ground spike or ground anchor

1

2

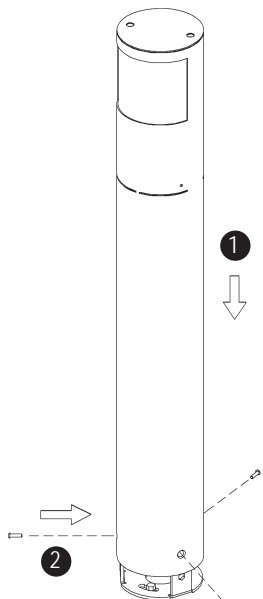


230 V ~

Der elektrische Anschluß darf nur vom Fachmann ausgeführt werden!
Must only be installed by a qualified electrician!

3

4

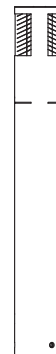


009-233
010-631
010-632

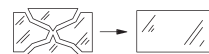


230 V ~
230 V AC
Bestückung: LED.next 10 W
lamp type: LED.next 10 W
Schutzart IP 55
protection degree IP 55

009-232
010-629
010-630



230 V ~
230 V AC
Bestückung: LED.next 18 W
lamp type: LED.next 18 W
Schutzart IP 55
protection degree IP 55



Jede gebrochene Schutzscheibe ersetzen.
Replace damaged or missing glass cover.



5