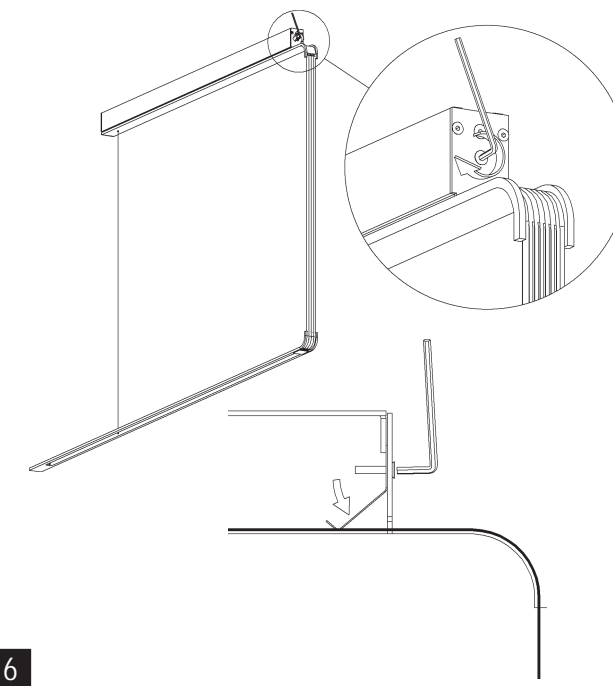
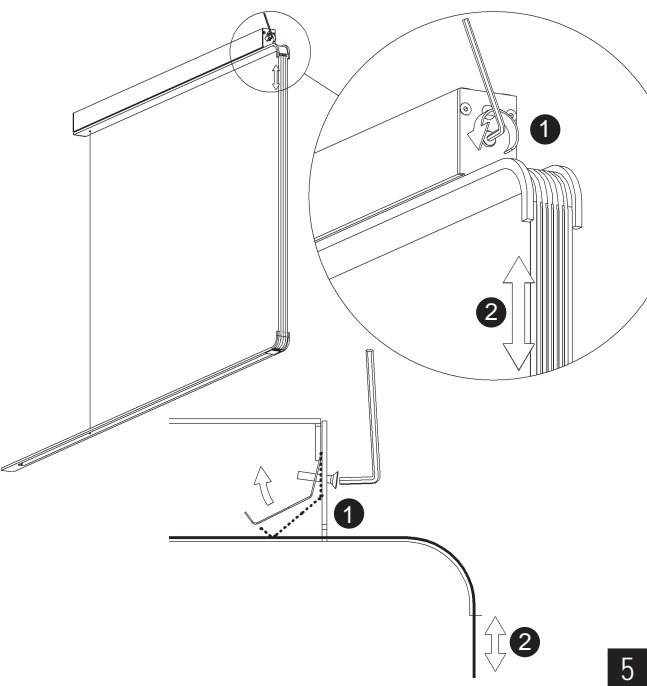
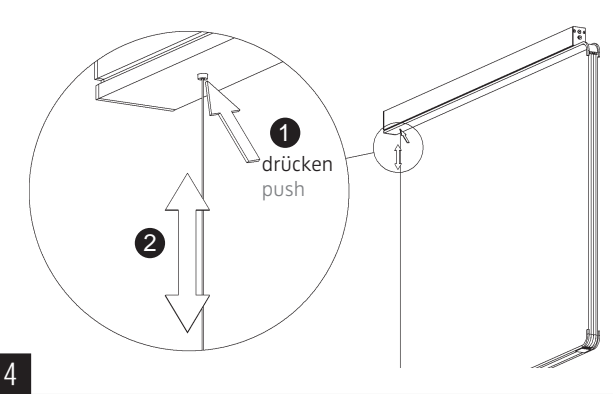
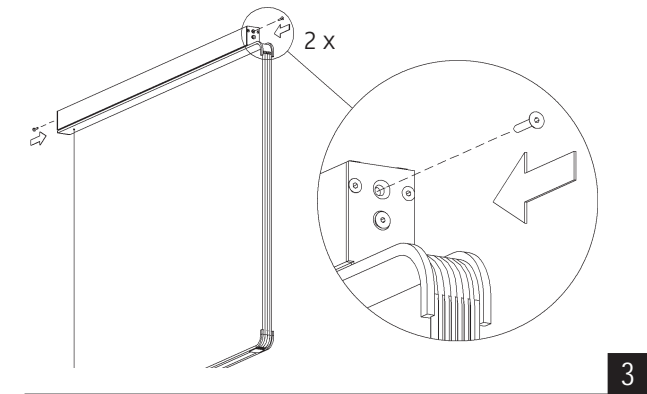
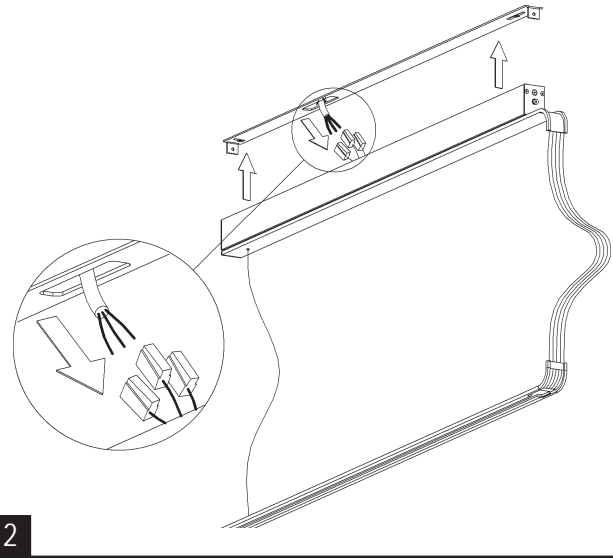
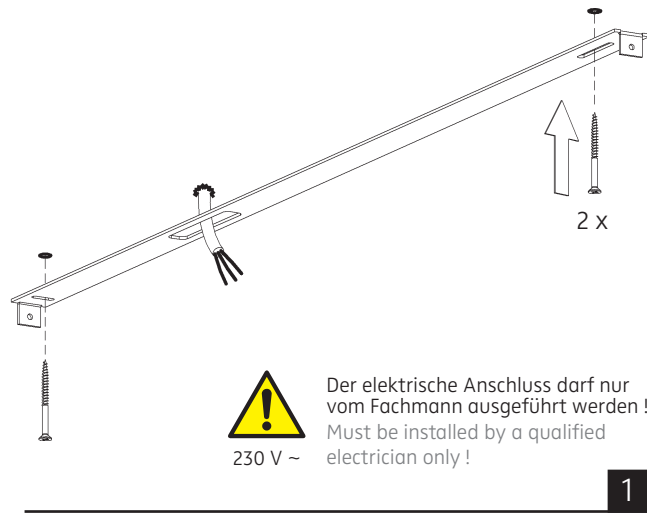


MONTAGE / MOUNTING

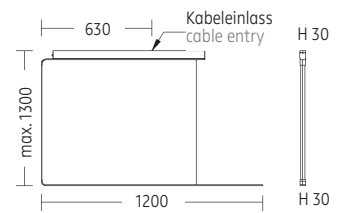


010-441 . 004-146 . 010-546

230 V ~ / 50-60 Hz
230 V AC / 50-60 Hz

Leistungsdaten siehe Typenschild!
Performance data see rating label!

Schutzart IP 20
protection degree IP 20



! Wichtiger Hinweis:

Knicke können das Folienkabel beschädigen.
Das Folienkabel sollte nicht verdreht werden.

Beim Entpacken beide Leuchtenteile gleichzeitig
der Verpackung entnehmen.

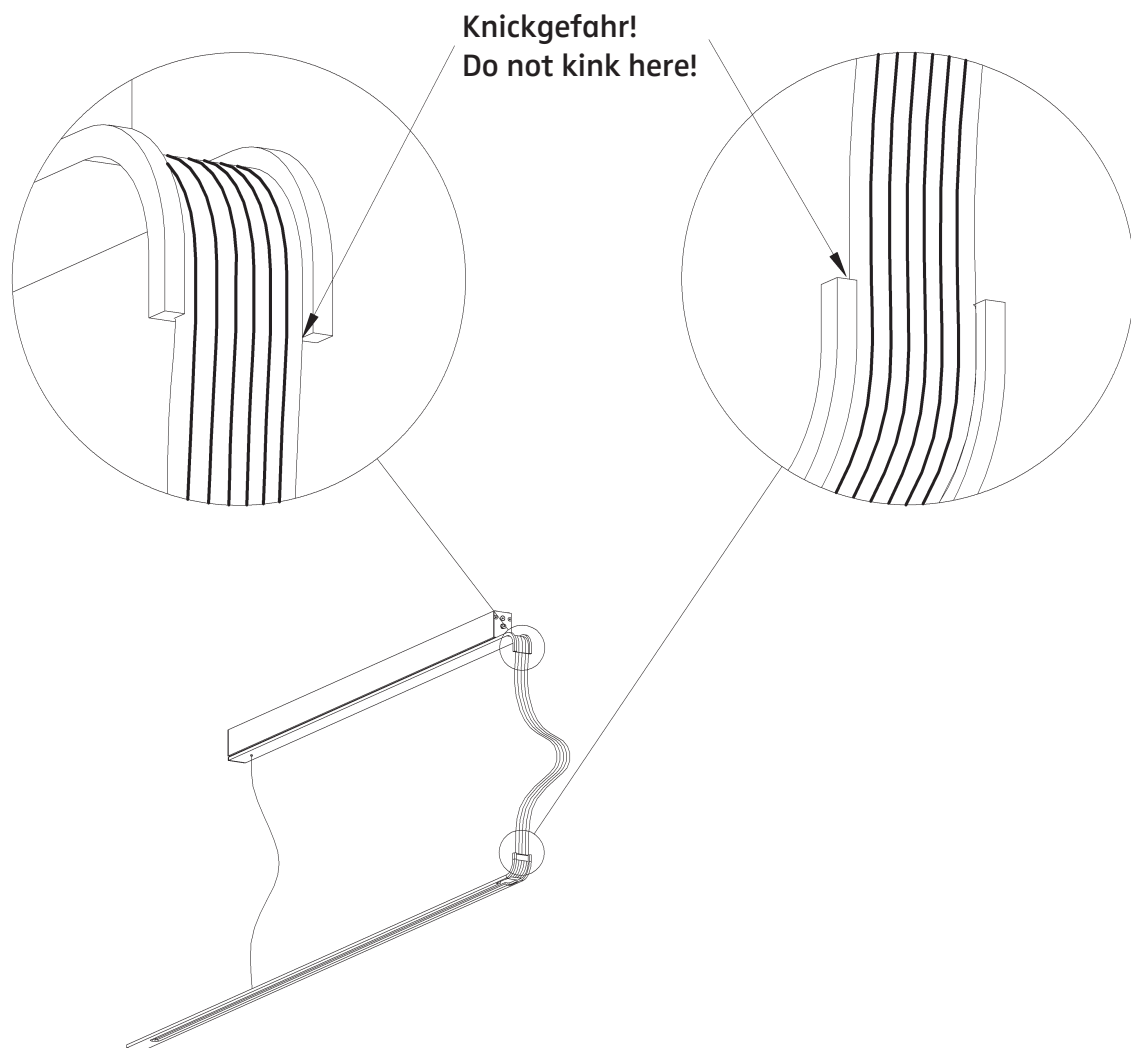
Bei der Montage beide Leuchtenteile möglichst
parallel halten, um Knicke im Folienkabel zu
vermeiden.

! Important note:

Kinks can damage the film cable.
Do not twist the cable.

Please take both pieces in the same time out of
the packaging.

Keep luminaire pieces parallel during the instal-
lation to avoid kinks in the film cable.



Dieses Produkt wurde sorgsam geprüft und gewissenhaft verpackt.
This item was thoroughly inspected and left our factory in perfect condition.

Nimbus Montageleitung
Nimbus Versand