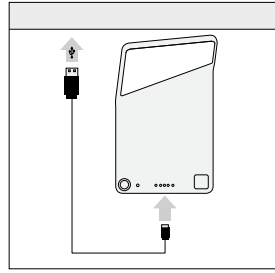
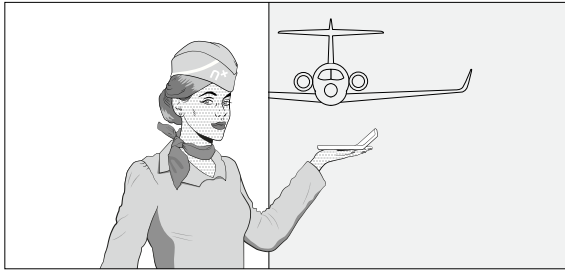


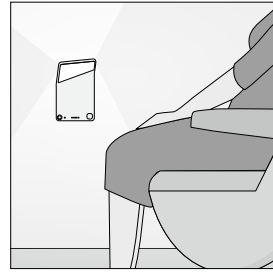
WINGLET CL

WILLKOMMEN / WELCOME

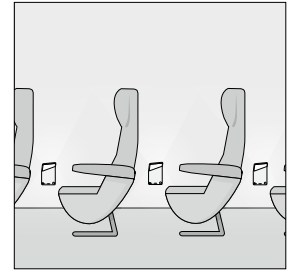
IHRE VORTEILE / YOUR BENEFITS



Micro-USB
Micro USB



bodennahe Beleuchtung
ground level lighting



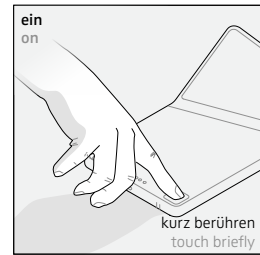
Gruppenschaltung
grouping

GRUNDBETRIEBSARTEN / BASIC MODES

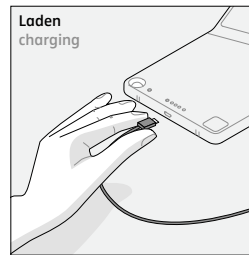
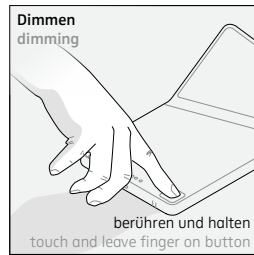
Start / Start



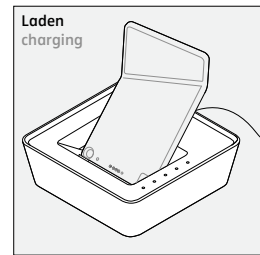
oder
or



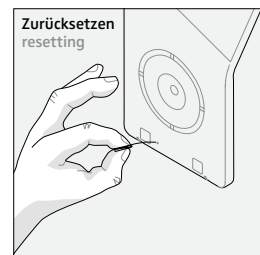
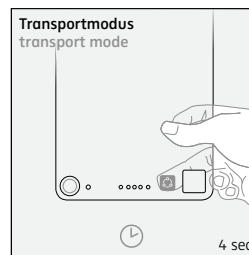
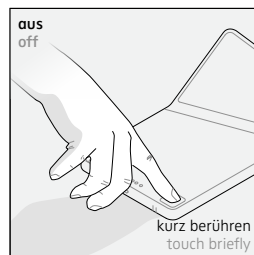
Während des Flugs / Throughout the flight



oder
or

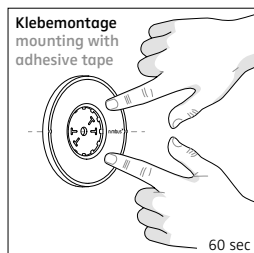


Ausschalten / Off

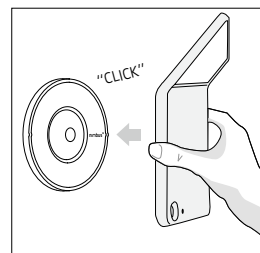
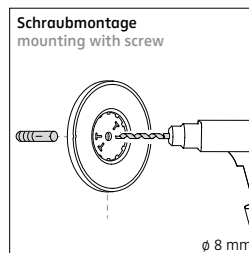


MONTAGE / MOUNTING

Montage / Mounting

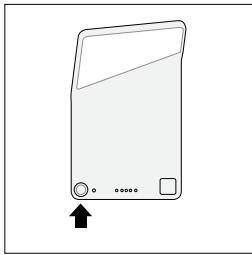


oder
or

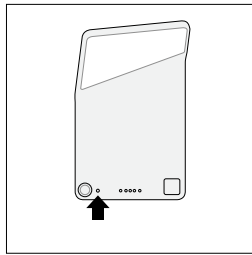




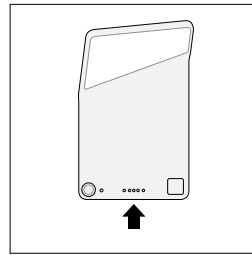
GRUNDELEMENTE / BASIC ELEMENTS



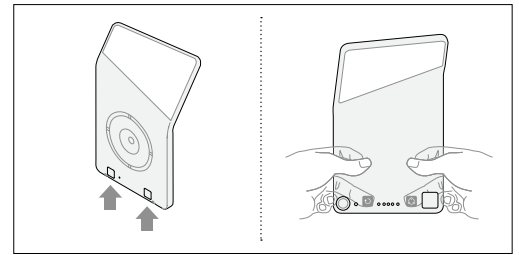
Bewegungsmelder
motion detector



Helligkeitssensor
brightness sensor



Statusanzeige
status display



Programmiertasten auf der Rückseite
programming buttons on the back

PROGRAMMIERUNG / PROGRAMMING

3 Schritte / 3 steps

1

3 sec

Programmier-Modus aktivieren
activating programme mode

Beide Tasten drücken, bis blaue LED aufleuchtet
Press both buttons until the blue LED lights up

2

3 sec

Programmierung
programming

3

3 sec

Speichern
save

Beide Tasten drücken, bis blaue LED erlischt
Press both buttons until the blue LED goes out

Dreimaliges Aufblinker
der Leuchte bestätigt die Programmierung.
The luminaire flashes on and off three times to confirm the programming.

2

Gruppenzuweisung
Grouping

jeweils kurz drücken
press briefly for next step

Status Gruppe / group status

Gruppe 1 group 1 Gruppe 2 group 2 Gruppe 3 group 3 Gruppe 4 group 4 Gruppe 5 group 5 Gruppe 6 group 6 keine Gruppe no group

(Werkseinstellung) (factory setting)

Statusabfrage
querying status

kurz drücken
press briefly

Bewegungsmelder & Nachleuchtdauer
Motion detector & off delay

jeweils kurz drücken
press briefly for next step

Status Bewegungsmelder & Nachleuchtdauer / status of motion detector & off delay

10 sec 1 min 3 min 5 min 15 min 3 + 60 min minimale Helligkeit 3 + 60 min minimum brightness Nicht aktiv not active

(Werkseinstellung) (factory settings)

Statusabfrage
querying status

kurz drücken
press briefly

Start
starting

Taste 3 Sek. drücken, bis grüne LED aufleuchtet, dann loslassen
press the button 3 seconds until the green LED lights up, then release

Loslassen, Leuchte blinkt für 4 Sek., dann startet die Messung
Release button, luminaire flashes for 4 seconds, then the measurement starts

Zurücksetzen
resetting

Taste 6 Sek. drücken, bis grüne LED auf Rot wechselt, dann loslassen
press the button 6 seconds until the green LED changes to red, then release